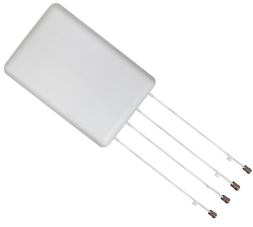


CMAX-DMF-43-UW-153



Low PIM Directional MIMO In-Building Antenna, 617–960 MHz, 1695–2700 MHz, 3300–4200MHz, and 4800–6000MHz 4.3-10, (2 PORTS 617-960 and 1695-2700MHz, 2 PORTS 3300-4200 and 4800-6000MHz)

Product Classification

Product Type In-building antenna

General Specifications

Application Indoor
Antenna Type Directional
Antenna Array Characteristic MIMO 2x2
Polarization $\pm 45^\circ$
Color White (RAL 9016)
Number of Ports 4
Pigtail Cable 670-141SXE, plenum rated
Radome Material ASA+PC, UV stabilized
RF Connector Interface 4.3-10 Female

Dimensions

Height 120 mm | 4.724 in
Width 310 mm | 12.205 in
Length 450 mm | 17.717 in
Pigtail Length 450 mm | 17.717 in

Electrical Specifications

Impedance 50 ohm
Operating Frequency Band 1695 – 2700 MHz | 3300 – 4000 MHz | 4800 – 6000 MHz | 617 – 698 MHz | 698 – 960 MHz
Electrical Note Values typical, unless otherwise stated

Electrical Specifications

Frequency Band, MHz	617–698	698–960	1695–2200	2200–2700	3300–4200	4800–6000
---------------------	---------	---------	-----------	-----------	-----------	-----------

CMAX-DMF-43-UW-153

Gain, dBi	7.7	7.9	8.8	9	8	8.2
Beamwidth, Horizontal, degrees	75	73	62	64	64	62
Beamwidth, Vertical, degrees	72	66	57	64	65	61
Front-to-Back Ratio, Copolarization 180° ± 30°, dB	17	17	20	15	17	17
Isolation, Cross Polarization, dB	20	20	25	25	20	22
VSWR Return loss, dB	1.7 11.7	1.6 12.7	1.5 14.0	1.5 14.0	1.7 11.7	1.7 11.7
PIM, 3rd Order, 2 x 20 W, dBc	-153	-153	-153	-153	-153	-153
Input Power per Port, maximum, watts	100	100	100	100	100	100

Environmental Specifications

Operating Temperature	-40 °C to +60 °C (-40 °F to +140 °F)
Relative Humidity	Up to 100%

Packaging and Weights

Height, packed	190 mm 7.48 in
Width, packed	340 mm 13.386 in
Length, packed	645 mm 25.394 in
Included	Mounting bracket
Weight, gross	4.6 kg 10.141 lb
Weight, net	3.1 kg 6.834 lb

Regulatory Compliance/Certifications

Agency	Classification
CHINA-ROHS	Below maximum concentration value
ROHS	Compliant
UK-ROHS	Compliant

